



EastBanc

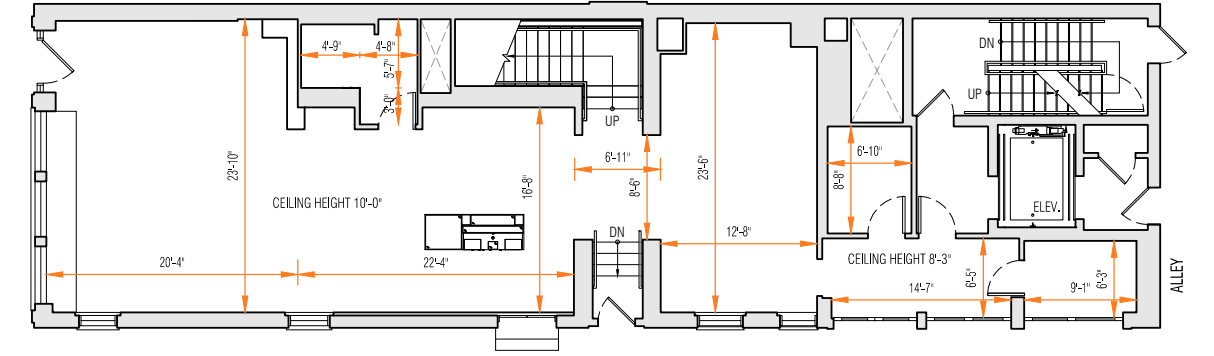
## 3034 M STREET, NW

› 5,512 SF AVAILABLE



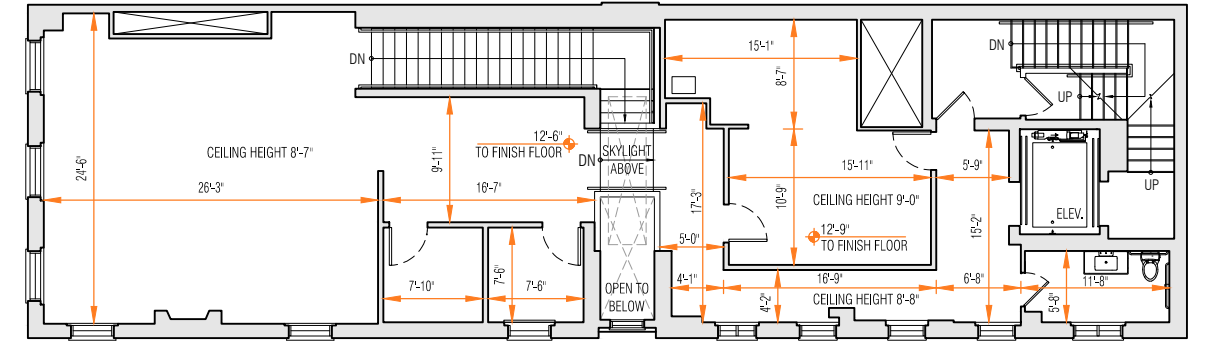
## GROUND FLOOR

1,505 SF



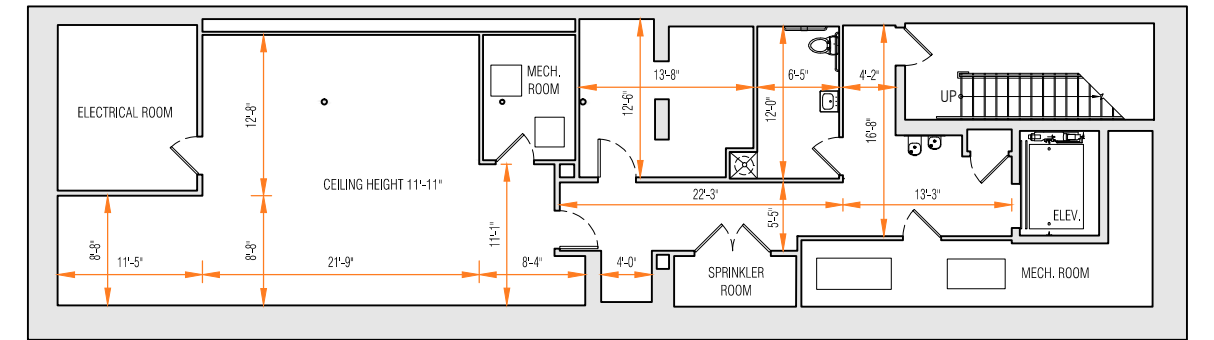
## SECOND FLOOR

2,014 SF



## BASEMENT

1,993 SF



TOTAL 5,512 SF

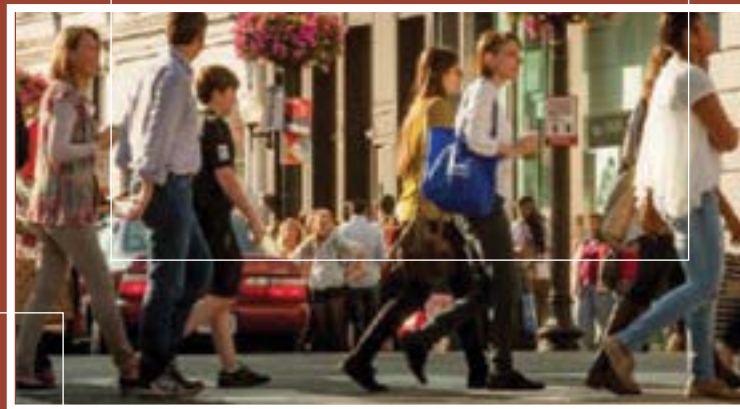
3034 M STREET, NW

# GEORGETOWN

OVER **800,000**  
NEARBY RESIDENTS

AVERAGE AREA INCOME OVER  
**\$110,000**

**35**  
AVERAGE AGE



OVER **70%**  
COLLEGE EDUCATED

**50,000**  
STUDENTS IN THE AREA

OVER **600,000**  
AVERAGE MONTHLY PEDESTRIANS

Map showing tenant distribution in Georgetown, bounded by Wisconsin Avenue, N Street, M Street, 31st Street, and 30th Street.

**WISCONSIN AVENUE**

**N STREET**

**M STREET**

**31ST STREET**

**30TH STREET**

**THOMAS JEFFERSON**

**FOXROT**  
JOHN FLUEVOG  
SEE OPTICAL  
AVAILABLE  
AVAILABLE  
KENDRA SCOTT  
**RALPH LAUREN**  
ANN TAYLOR LOFT  
**MADEWELL**  
APPLE  
AVAILABLE  
VINEYARD VINES  
TORY BURCH

**P**

**PNC BANK**  
**AMERICAN EATS**  
ALL BIRDS  
AVAILABLE  
AVAILABLE  
URBAN OUTFITTERS  
JAMES ALLEN  
KITTEN LOUNGE  
MICHAEL KORS  
STATE AND LIBERTY

**RESIDENTAL**

US POST OFFICE  
EASTBANK  
TECHNOLOGIES

**P**

**AVAILABLE**  
**RAG & BONE**  
**AVAILABLE**  
RAG & BONE MEN  
BLUE MERCURY  
MISS SAIGON  
HISTORIC OLD STONE HOUSE  
JUNIOR LEAGUE  
**REFORMATION**  
**AVAILABLE**  
**OUTDOOR VOICES**  
THE PAPER SOURCE  
SPRINKLES CUPCAKE  
**FREE PEOPLE**  
LE LABO  
I-THAI  
MYKITA

**WISCONSIN AVENUE**

**31ST STREET**

**30TH STREET**

**THOMAS JEFFERSON**

CAPITAL ONE  
GTOWN  
TOBACCO  
CHASE BANK  
FRANCESCA'S  
UBIQ  
STARBUCKS  
HAAGAN HAZZ  
BOOEGA  
MINISTRY OF SUPPLY  
KIEHLS  
DOC MARTEN  
LOCCITANE  
**PATAGONIA**  
**POTOMAC WINE**

90 SECOND PIZZA  
BLUES ALLEY  
LILLY PULITZER  
REREN  
MUNCHIEZ  
MANDALAY  
SOUTH MOON UNDER  
TAIM  
CHING CHING CHA

ROSEWOOD HOTEL  
DYLLAN'S RAW BAR

CHRISTIANE SALON & SPA  
ROTHY'S  
LUSH  
LADUREE  
THUNDER BURGER  
AMAZON BOOKS  
NIKE

**KATE SPADE**

INDOCHINO  
AVAILABLE  
FORMER LATHAM  
HOTEL

THE WING  
BAKED & WIRED

RESIDENTAL

COREPOWER YOGA

RESIDENTAL

## Neighboring Tenants

*allbirds*

amazon books

INDOCHINO



Reformation



**EastBanc**

**3307 M Street, NW, Suite 400**  
Washington DC, 20007

[eastbanc.com](http://eastbanc.com)

**ASHLEY BINKOWSKI**  
(202) 737-1000  
[abinkowski@eastbanc.com](mailto:abinkowski@eastbanc.com)

**BARRY GREENBERG**  
(202) 737-1000  
[bgreenberg@eastbanc.com](mailto:bgreenberg@eastbanc.com)